



INSTALLATION GUIDE

**2018+ SUBARU CROSSTREK
DIRECT FIT CATCH CAN | SKU: MMBCC-XTK-18P**

TABLE OF CONTENTS

- Pg 01** RESOURCES & CONTACT INFORMATION
- Pg 02** PARTS BREAKDOWN & EXPLODED DIAGRAM
- Pg 03** IMPORTANT SAFETY INFORMATION
 - TOOLS NEEDED
 - INSTALLATION TIME
 - INSTALLATION DIFFICULTY
 - INSTALLATION INSTRUCTIONS
- Pg 06** CARE & MAINTENANCE
 - DISPOSAL INSTRUCTIONS
 - WARRANTY INFORMATION

RESOURCES & CONTACT



CALL 1-877-GOMISHI

CUSTOMER SERVICE HOURS: MON-FRI 8:30AM-5:00PM EST



MISHIMOTO



GOMISHIMOTO



MISHIMOTO

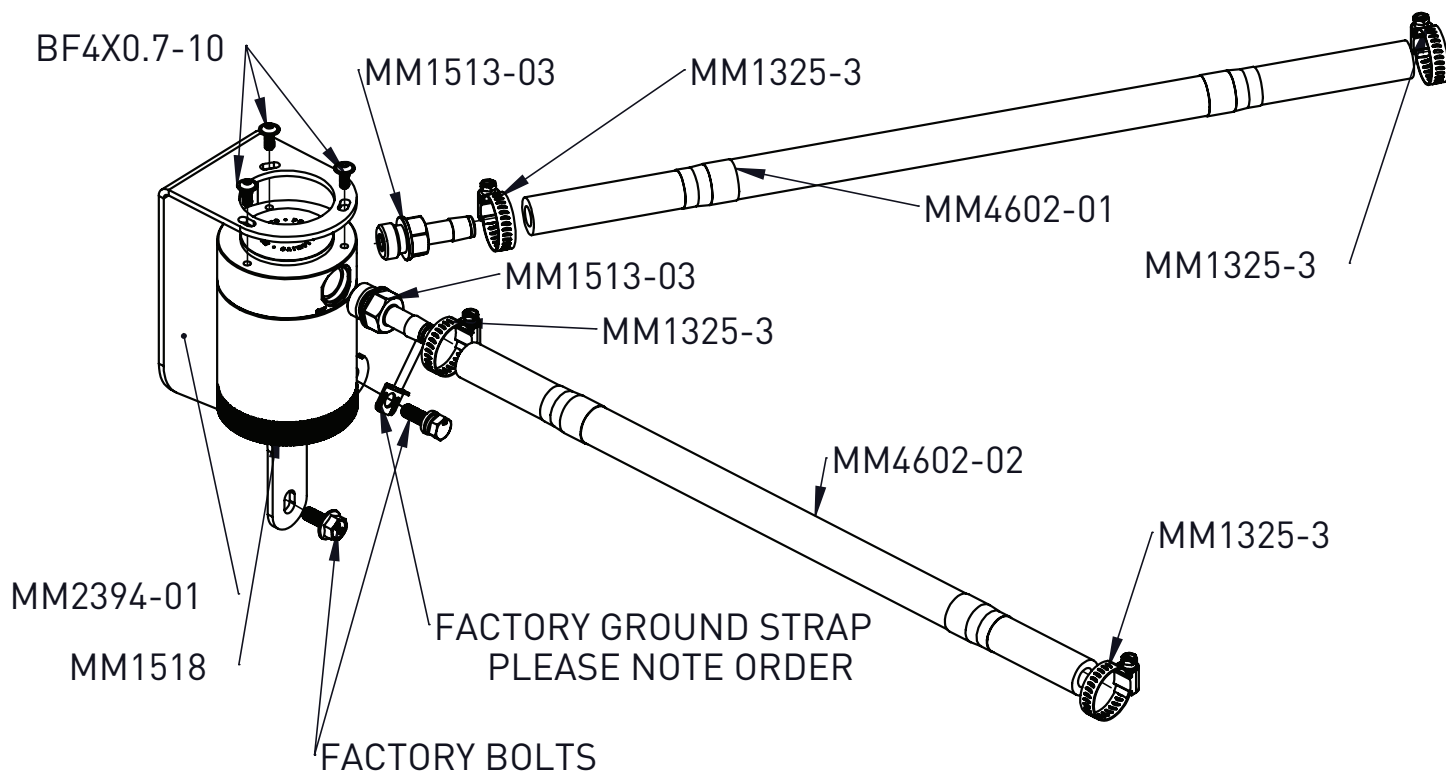


WEBSITE



ENGINEERING BLOG

WWW.MISHIMOTO.COM/ENGINEERING



PARTS BREAKDOWN

PART NUMBER	DESCRIPTION	QTY
MM2394-01	BRACKET	1
MM1518	CATCH CAN	1
MM4602-01	PCV TO CAN LINE	1
MM4602-02	CAN TO MANIFOLD LINE	1
MM1325-3	CLAMP	4
MM1513-03	FITTING	2
BF4X0.7-10	BOLT	3
	FACTORY BOLT*	2
	FACTORY GROUND STRAP*	1

***NOT PROVIDED BY MISHIMOTO.**

PLEASE NOTE THAT GROUND STRAP GOES
BETWEEN BOLT AND BRACKET

IMPORTANT SAFETY INFORMATION

- Mishimoto recommends you use safety glasses and protective gloves during the install of their products
- Raise vehicle only on jack stands or on a vehicle lift
- Allow vehicle to cool completely prior to attempting installation
- Do not run the engine or drive the vehicle while overheating; serious damage can occur
- Please dispose of any liquids properly
- Mishimoto is not responsible for any vehicle damage or personal injury due to installation errors, misuse, or removal of Mishimoto products
- If you need any assistance while installing our products, reach out to our Customer Service Team at 1-877-GOMISHI

INSTALLATION TIME 1 HOUR

INSTALLATION DIFFICULTY     

TOOLS NEEDED

FLATHEAD SCREWDRIVER	1/4" RATCHET WITH EXTENSION
8MM SOCKET	2.5MM ALLEN KEY
10 MM SOCKET	HOSE CLAMP PLIERS
17MM WRENCH	OR SIMILAR

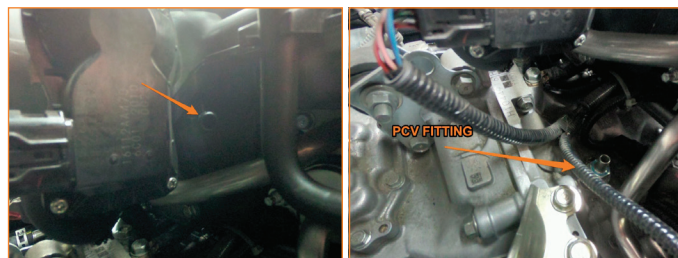
INSTALLATION INSTRUCTIONS

1. Disconnect the negative battery terminal to prevent damage to the electrical system when removing the ground later.

2. Remove air intake tube. Pay special attention to the hose connected to the back of the intake tube on driver side.



3. Remove Factory PCV line that connects the back of the intake manifold (behind throttle body) to the PCV fitting on the block.



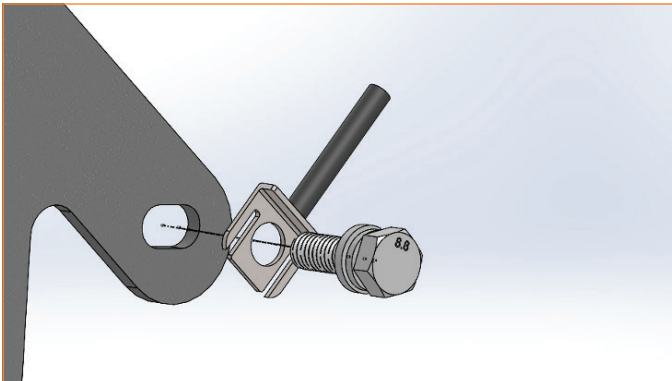
4. Locate and remove two 10mm bolts on the firewall. The lower one secures a plastic wire cover and the upper bolt secures a ground wire. Take special care to make sure that the bolts go back into the same holes (the lower bolt has the cross for phillips-head screwdriver).



CONTINUED ON FOLLOWING PAGE

5. Slide the catch can bracket between the plastic bracket and firewall. Reinsert both bolts into their original holes and tighten.

IMPORTANT: MAKE SURE THAT THE GROUND STRAP IS IN FRONT OF THE BRACKET TO ENSURE PROPER GROUNDING!



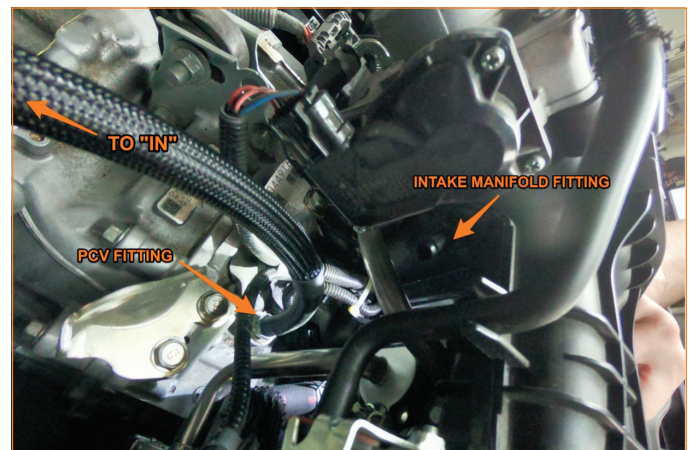
6. Install both catch can fittings into the catch can. (17mm wrench) Remove the 3x 2.5mm allen head bolts from the catch can.



7. Install the catch can onto the bracket as shown. The outlet ("out") of the catch can should be facing approximately towards the front of the vehicle. Thread the 3x 2.5mm allen head bolts but DO NOT fully tighten.



8. Take the LONGER of the two hoses and attach one end to the PCV fitting on the block and the other end to the "IN" fitting on the catch can. If you prefer to use the optional clamps, make sure to install 2x clamps on the hose BEFORE installing the hose.



9. Install one end of the SHORTER hose onto the intake manifold fitting and the other end to the "OUT" fitting on the catch can. If you prefer to use the optional clamps, make sure to install 2x clamps on the hose BEFORE installing the hose. **NOTE: Pay special attention when removing this hose in the future as the intake manifold fitting can easily break off from the intake manifold.**

CONTINUED ON FOLLOWING PAGE

10. Ensure both hoses are properly routed without any kinks and tighten the 3x 2.5mm allen head bolts securing the catch can to the catch can bracket. Tighten the optional 4x hose clamps if used.

11. STOP. Double check to make sure that you have properly installed the ground strap in front of the bracket as shown.



12. Reinstall intake tube. DO NOT forget to reattach the hose on the back of the tube.

13. Reinstall negative battery terminal.

Congratulations! You have finished your installation.

CARE AND MAINTENANCE

- › Check contents of the baffled catch can every 1,000 miles until a baseline is established. Inspect catch can kit every 10,000 miles for loose or worn components.

DISPOSAL INSTRUCTIONS

- › Do not dispose of any product as unsorted municipal waste. Use separate collection facilities. Contact your local authority for information regarding the collection systems available.
- › Never improperly dispose of any coolant, oil, or other chemicals.

WARRANTY INFORMATION



- › All claims must be accompanied with a picture of the Mishimoto product showing the issue for which the claim is being submitted.
- › Mishimoto asks that the customer inspect their purchased item for any damage immediately upon arrival.
- › Any product deemed dead on arrival (DOA) must be claimed within 14 business days of delivery. Claims outside of this time frame will not be covered under the Mishimoto Lifetime Warranty.
- › This warranty does not include payment and/or reimbursement of the cost of labor in connection with the removal of any product returned pursuant to the warranty policy or in connection with the installation of any replacement items provided under the warranty policy.
- › Mishimoto has the right to refuse a claim at any time.
- › When Mishimoto accepts a claim, Mishimoto retains full discretion to choose if it will: (i) repair or replace purchaser's original Mishimoto product; (ii) replace purchaser's original Mishimoto product with the most current available model; or (iii) provide the purchaser with a gift card redeemable on [Mishimoto.com](https://www.mishimoto.com) in the amount of the original purchase price of

the original Mishimoto product. The provision of a replacement of a Mishimoto product is subject to availability and Mishimoto retains the right to substitute any warranty claim item with a comparable item or credit at any time.

- › If Mishimoto determines that it will provide a replacement item in connection with a claim under this warranty policy, and such item is out of stock, Mishimoto will place the customer on backorder and ship the replacement product to the purchaser once it becomes available.
- › Mishimoto is not liable for incorrect shipments in connection with a claim if a claim form is completed incorrectly, or if a model number is not included in a claim.
- › If you have a vehicle equipped with an automatic transmission, please make sure to specify this within the text box on the claim form. Mishimoto is not responsible for incorrect replacement shipments if transmission type is not indicated.



WARNING
Cancer and
Reproductive Harm
www.P65Warnings.ca.gov

This product can expose you to chemicals which are known to the state of California to cause cancer. For more information visit: www.p65warnings.ca.gov